



Safety First on Belfast Lough



**Welcome to the
Port Of Belfast**

**No Unauthorised Entry
beyond this point**

Recreational Craft Must Contact
"Belfast Harbour Radio"
on VHF Channel 12 for traffic
clearance to proceed

All users of the Lough are expected to operate in a safe & responsible manner.

Users are required to always comply with international collision regulations.

Users are reminded to check the sailing & arrival times of fast ferries in the area.

Users are advised to be mindful of the signage around the Lough highlighting the possibility of unexpected wavewash generated by shipping using Belfast Harbour.



WARNING
Beware of unexpected waves and spray
when launching or recovering craft



WARNING
Beware of unexpected waves
and spray

Welcome to Belfast Harbour

Welcome to the 2012 Tide Tables for Belfast Lough.

I hope you find the information contained within to be beneficial to your safe navigation of the waters around Belfast Lough and to your enjoyment of Belfast Harbour's recreational facilities.

In 2009, as part of our commitment to the Tall Ships, 240m of pontoons were installed in the Abercorn Basin which was dredged to a depth of 4m. First opened in 1867, the Abercorn Basin and Hamilton Dry-dock have witnessed decades of commercial activity but the area's maritime use declined with the combination of port expansion and subsequent shore-side developments.

300m

**of pontoons have been
installed at the Abercorn Basin**

I am delighted that the facilities in Abercorn Basin will revitalise and energise the area and allow Belfast Harbour to once again welcome recreational users and visitors from across the UK, Ireland and further afield.

To ensure your safety and to maximise your enjoyment within Belfast Harbour limits, could I draw your attention to Notice to Mariners No.1 2012 which is a summation of all notices in force at the start of 2012. This Notice will be advertised in the local media in January 2012 and is also available to inspect on the website -

www.belfast-harbour.co.uk

Thereafter I recommend that you regularly review the website to inspect all New Notices as they appear throughout 2012 and to remain up-to-date on our policies and procedures for the management of recreational visitors and facilities.

**Finally can I wish you
a safe and enjoyable visit
to Belfast Harbour!**



Port Centre
Captain K G Allen
Belfast Harbour Master
30th November 2011

Safety First - Lifejackets

“Lifejackets save lives” (MCA, 2007)

Notice is hereby given that it is strongly recommended that all recreational boat users in the Port of Belfast wear correctly maintained, fit for purpose Lifejackets and Buoyancy Aids at all times when at sea.

On 4th July 2008 an expert panel review, comprising of staff from the RYA, RNLI, MAIB, and industry, was convened to analyse fatal maritime incidents in 2007 and assess whether a lifejacket would have made a difference in saving a person's life.

After reviewing each incident, the panel had to choose from whether it was Probably, Possibly or Unlikely that the person would have been saved by wearing a lifejacket that was suitably maintained, correctly worn and fit for purpose, or alternatively, that it was Not Appropriate for the person to have been wearing a lifejacket in the particular incident under review.

Belfast Harbour radio can be contacted via
or by telephone on

Channel 12 VHF
028 9055 3504

From a total of 133 fatalities, 91 were deemed as Not Appropriate for the casualty to be wearing a lifejacket. These deaths covered recreational activities such as Diving and Coastal Walking where there is no call for the participant to wear a lifejacket, and other 'misadventures' where a person ended up drowning despite not taking part in any maritime activity.

Of the remaining 42 fatalities, it was agreed that in 29 cases (69%), a lifejacket would have had a more positive outcome, either probably or possibly saving a person's life.

(MCA, 2007)





Code of Practice for recreational users

The Abercorn Basin pontoons are available for recreational visitors. This facility consists of 300m of recreational pontoons which are available for visiting and seasonal berthing. They are also available for organised events on application. Recreational crafts are not permitted to use any other berth facilities in the Port.

Transits to and from this facility are controlled and managed by the Harbour's Vessel Traffic Service (VTS) via VHF Channel 12 as described in Notice to Mariners No.2 of 2009.

The following summary has been amended specifically for recreational users but the current Notice to Mariners guides should always be consulted on Belfast Harbour's website - www.belfast-harbour.co.uk

Summary for recreational visitors to Belfast Harbour

The following rules and conditions apply to all recreational vessels entering Belfast Harbour limits. All recreational vessels south of No 12 buoy and within Victoria Channel to the Fairway buoy are subject to the instructions of Port Control's Traffic Organisation Service.

Users are required to have Admiralty Chart 1752 or equivalent and a planned passage to and from the intended facility and the vessel's maximum draft will not exceed 4 metres.

Navigation is permitted in Victoria Channel and Lagan River. Exclusion areas are Herdman Channel and Musgrave Channel unless access is required to Connswater.

Vessels must maintain a listening watch on VHF Channel 12 whilst in Harbour limits and are required to report to Belfast Harbour radio as follows:

- 15 minutes prior to arrival at the Fairway Buoy or entry point
- Passing the Fairway Buoy in and out
- Passing No. 12 Beacon in and out
- Arriving at the berth
- 15 minutes prior to departing the berth

Initial arrival and departure reports to include:

- Vessel Name
- Position
- Master's name or person responsible for the vessel's navigation
- ETA at Fairway Buoy or planned entry point

- Intended destination (Abercorn Pontoon/Lagan River/Connswater)
- Number of people on board
- Planned length of stay

Whilst manoeuvring within Harbour limits, the following rules will apply:

- All vessels navigating in the Port Limits must comply with International Regulations for the Prevention of Collisions at Sea
- All vessels must be equipped and manned to undertake all transits safely
- Transits will not impede commercial traffic
- All recreational vessels must operate at all times under power
- Sails must be down
- All users must continuously monitor VHF Channel 12
- Vessels should maintain a safe and appropriate speed
- No sightseeing or stopping is permitted during transit



Whilst berthed within Belfast Harbour:

- All vessels must be adequately moored either to the pontoon or to the ground moorings or to a rafted off vessel
- Anchoring is not permitted in the Entrance or Victoria Channel
- All vessels must supply a 24 hr. contact number to Port Control if VHF Channel 12 is not to be monitored continuously

The following will not be permitted at the recreational facility:

- Fuelling - fuel is however available for purchase by prearrangement at a refuelling berth
- Selling
- Commercial operations unless approved by the Harbour Master
- Repairs
- Painting/Cleaning
- Movement of or launching of dinghies, tenders or rafts (unless for mooring to ground tackle)

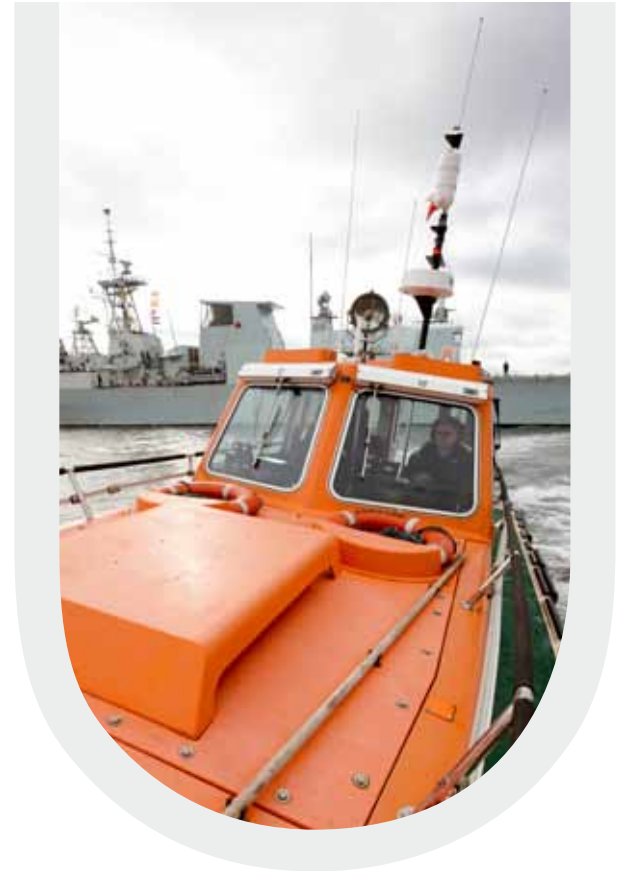
- Open flames
- Noisy, noxious or objectionable engines, radios or other apparatus or machinery
- Discharge of refuse or sewage either into the Harbour or to shore

**In case of an emergency,
immediately contact Belfast
Harbour Radio on VHF Ch 12
or 16 or by telephone on
028 9055 3504 or Belfast Harbour
Police on 028 9055 3000.**

These conditions apply to vessels using any recreational facilities in Belfast Harbour and may be changed at any time by the Harbour Master.

**Failure to maintain these
conditions may result in
exclusion from using the facility
in the future.**

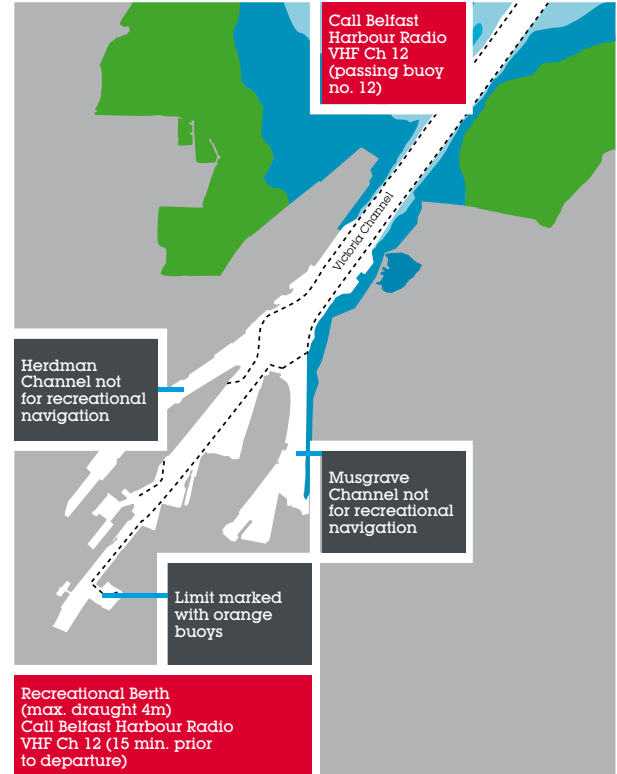
Safety First
on Belfast Lough



Guidance for recreational users



For guidance only – do not use for navigation



For guidance only – do not use for navigation

Emergency Contact Numbers for recreational users

Coastguard

VHF Channel 16
Tel +44 (0)28 9146 3933
or 999

Northern Ireland Fire & Rescue Service

Tel +44 (0)28 9266 4221
or 999

Belfast Harbour Radio

VHF Channel 12
Tel +44 (0)28 9055 3504

Northern Ireland Ambulance Service

Tel 999

Port of Belfast

Tel +44 (0)28 9055 4422

Harbour Master Office

Tel +44 (0)28 9055 3015

Belfast Harbour Police

Tel +44 (0)28 9055 3000

Attention is drawn to the Notices to Mariners on Belfast Harbour's website www.belfast-harbour.co.uk; in particular to Notice to Mariners No.1 of 2012

Tidal Constants

Port	H	M
Ardglass	+0	23
Ayr	+0	56
Ballycastle	-3	20
Bangor	+0	10
Buncrana, Lough Swilly	-5	6
Carlingford Bar	+0	24
Campbelltown	+0	44
Coleraine	-4	3
Corran Narrows	-5	17
Crinan	+5	48
Donaghadee	+0	20
Douglas, IoM	+0	7
Dublin	+0	39
East Tarbert (Lough Fyne)	+0	55
Galway	-6	00
Gigha Sound	+3	31
Heysham	+0	11
Killyleagh, County Down	+2	2
Kyleakin	-4	28
Lamlash	+0	50
Larne	+0	4
Londonderry	-2	53
Mull of Kintyre	-0	24
Newcastle, Dundrum Bay	+0	30
Oban	-5	24
Point of Ayre	+0	3
Portavogie	+0	15
Port Ellen (Islay)	-6	0
Port Patrick	+0	10
Portree	-4	38
Portrush	-4	33
Red Bay	+0	6
Strangford Bar	+0	16
Strangford Quay	+1	52
Tobermory	-5	14
Warrenpoint, County Down	+0	30

Times & Heights of High & Low Waters

All times are in (GMT) Greenwich Mean Time.

Heights refer to Harbour Datum which is also Admiralty Chart Datum.

Tidal predictions for Belfast have been computed by The United Kingdom Hydrographic Office (copyright reserved).

Phases of the Moon are reproduced, with permission, from data supplied by The United Kingdom Hydrographic Office.

Follow these steps carefully

- The International Regulations for the Prevention of Collision at Sea Rules apply throughout the Lough - know them and follow them
- Give early notice of your intentions as fast ferries approach very quickly
- Check the fast ferry times in your area
- Watch out for the fast ferry wash, especially when launching or retrieving boats

For information on winter and summer berthing, please call **028 9055 3013** or e-mail marina@belfast-harbour.co.uk
Further details are also available on the Belfast Harbour website: belfast-harbour.co.uk/port/marina



Levels of Tides

Above Harbour Datum

	Feet	Meters
Mean High Water, Spring Tides	11.4	3.5
Mean High Water, Neap Tides	9.7	2.9
Mean Low Water, Spring Tides	1.4	0.4
Mean Low Water, Neap Tides	3.5	1.1

Highest spring tide on record

5th January 1991 16.07 4.9

Average range of tide

(At spring tides) 10.0 3.1
 (At neap tides) 6.2 1.9

Time of High Water at the full and change of the moon, 10h. 35m.

The Tidal current runs at the rate of .33 knot on Spring tides, and .25 knot on Neap tides.

Harbour & ordnance datum

Harbour Datum Level of No.2 Clarendon Dry Dock Sill, which is also Admiralty Chart Datum.

Ordnance datum (1958)

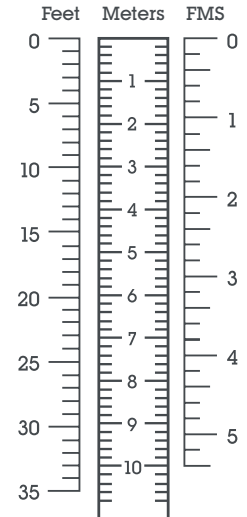
6.61 feet (2.0 metres) above Harbour datum.

Conversion Table

Care has been taken in compiling the information given, but Belfast Harbour cannot be responsible for any inaccuracy, mis-statement or omission.

Moon symbols used:

- New
- Full



January 2012

	Time	Metres		Time	Metres
1st Sunday	04:16 10:01 16:30 22:55	3.1 1.1 3.3 1.0	8th Sunday	04:11 10:32 16:33 22:55	0.9 3.5 0.7 3.3
2nd Monday	05:07 11:00 17:23 23:59	3.0 1.2 3.1 1.1	9th Monday	04:50 11:07 17:11 23:24	0.8 3.6 0.6 3.3
3rd Tuesday	06:01 12:12 18:22	3.0 1.3 3.0	10th Tuesday	05:28 11:37 17:48 23:52	0.7 3.6 0.5 3.3
4th Wednesday	00:59 07:01 13:21 19:31	1.1 3.0 1.3 3.0	11th Wednesday	06:05 12:10 18:26	0.7 3.7 0.5
5th Thursday	01:56 08:06 14:20 20:42	1.1 3.1 1.2 3.0	12th Thursday	00:27 06:43 12:49 19:04	3.3 0.7 3.7 0.4
6th Friday	02:46 09:05 15:10 21:36	1.0 3.3 1.0 3.1	13th Friday	01:09 07:23 13:32 19:45	3.3 0.7 3.7 0.4
7th Saturday	03:30 09:52 15:54 22:19	0.9 3.4 0.9 3.2	14th Saturday	01:55 08:06 14:19 20:31	3.3 0.7 3.7 0.5
			15th Sunday	02:44 08:53 15:09 21:21	3.2 0.8 3.6 0.6

	Time	Metres		Time	Metres
16th Monday	03:38 09:47 16:04 22:18	3.2 0.9 3.5 0.7	24th Tuesday	05:22 11:45 17:59	0.7 3.7 0.4
17th Tuesday	04:38 10:51 17:08 23:26	3.1 1.0 3.4 0.9	25th Wednesday	00:10 06:01 12:27 18:38	3.3 0.7 3.7 0.4
18th Wednesday	05:49 12:11 18:24	3.0 1.0 3.2	26th Thursday	00:51 06:38 13:06 19:14	3.3 0.7 3.7 0.5
19th Thursday	00:44 07:10 13:32 19:45	0.9 3.1 1.0 3.2	27th Friday	01:31 07:13 13:46 19:47	3.2 0.7 3.6 0.6
20th Friday	01:56 08:25 14:41 20:55	0.9 3.2 0.8 3.3	28th Saturday	02:11 07:49 14:25 20:22	3.2 0.8 3.5 0.7
21st Saturday	02:58 09:25 15:40 21:52	0.8 3.4 0.6 3.3	29th Sunday	02:52 08:28 15:06 21:01	3.2 0.8 3.4 0.8
22nd Sunday	03:51 10:16 16:31 22:42	0.7 3.5 0.5 3.4	30th Monday	03:35 09:12 15:49 21:46	3.1 0.9 3.3 0.9
23rd Monday	04:39 11:02 17:17 23:28	0.7 3.7 0.4 3.4	31st Tuesday	04:22 10:01 16:38 22:42	3.1 1.1 3.1 1.1

**February
2012**

	Time	Metres		Time	Metres
1st Wednesday	05:13 11:03 17:34	3.0 1.2 2.9	8th Wednesday	05:07 11:13 17:27 23:31	0.6 3.6 0.3 3.3
2nd Thursday	00:07 06:11 12:37 18:38	1.2 2.9 1.3 2.8	9th Thursday	05:44 11:48 18:04	0.5 3.7 0.3
3rd Friday	01:20 07:17 13:48 19:56	1.2 2.9 1.2 2.8	10th Friday	00:06 06:21 12:29 18:42	3.3 0.5 3.7 0.2
4th Saturday	02:18 08:28 14:44 21:11	1.1 3.1 1.0 2.9	11th Saturday	00:48 07:01 13:13 19:23	3.3 0.5 3.8 0.3
5th Sunday	03:07 09:24 15:31 21:56	0.9 3.2 0.8 3.1	12th Sunday	01:33 07:43 14:00 20:08	3.3 0.5 3.7 0.3
6th Monday	03:51 10:06 16:12 22:31	0.8 3.4 0.6 3.2	13th Monday	02:21 08:30 14:50 20:56	3.3 0.5 3.6 0.5
7th Tuesday	04:30 10:40 16:50 23:01	0.7 3.5 0.4 3.2	14th Tuesday	03:13 09:23 15:46 21:52	3.2 0.7 3.4 0.7
			15th Wednesday	04:11 10:29 16:51 23:01	3.1 0.8 3.2 0.9

	Time	Metres		Time	Metres
16th Thursday	05:24 11:57 18:11	3.0 0.9 3.0	24th Friday	00:26 06:12 12:43 18:41	3.2 0.6 3.5 0.5
17th Friday	00:29 06:55 13:23 19:40	1.0 3.0 0.9 3.0	25th Saturday	01:01 06:43 13:17 19:11	3.2 0.6 3.5 0.6
18th Saturday	01:47 08:16 14:34 20:49	1.0 3.1 0.7 3.1	26th Sunday	01:36 07:16 13:53 19:44	3.2 0.6 3.4 0.6
19th Sunday	02:51 09:15 15:34 21:43	0.9 3.3 0.5 3.2	27th Monday	02:14 07:53 14:30 20:20	3.2 0.6 3.3 0.7
20th Monday	03:44 10:05 16:22 22:30	0.7 3.4 0.4 3.2	28th Tuesday	02:54 08:33 15:10 21:01	3.2 0.7 3.2 0.9
21st Tuesday	04:29 10:49 17:04 23:12	0.6 3.5 0.3 3.2	29th Wednesday	03:39 09:19 15:56 21:49	3.1 0.9 3.0 1.0
22nd Wednesday	05:07 11:29 17:40 23:51	0.6 3.6 0.3 3.2			
23rd Thursday	05:41 12:07 18:13	0.6 3.5 0.4			

Safety First
on Belfast Lough

March 2012

		Time	Metres
1st Thursday	04:29 3.0 10:14 1.1 16:53 2.8 22:55 1.2	8th Thursday	04:43 0.4 10:45 3.6 17:01 0.2 23:07 3.3
2nd Friday	05:28 2.9 11:38 1.2 17:58 2.7	9th Friday	05:20 0.4 11:25 3.7 17:38 0.1 23:46 3.4
3rd Saturday	00:44 1.2 06:32 2.8 13:16 1.1 19:09 2.7	10th Saturday	05:58 0.3 12:09 3.7 18:18 0.1
4th Sunday	01:49 1.1 07:40 2.9 14:15 0.9 20:27 2.8	11th Sunday	00:28 3.4 06:38 0.3 12:56 3.7 19:00 0.2
5th Monday	02:41 0.9 08:42 3.1 15:04 0.6 21:20 3.0	12th Monday	01:15 3.4 07:23 0.3 13:46 3.7 19:46 0.3
6th Tuesday	03:26 0.7 09:28 3.3 15:46 0.4 21:57 3.1	13th Tuesday	02:04 3.4 08:12 0.4 14:39 3.5 20:36 0.5
7th Wednesday	04:06 0.6 10:07 3.4 16:24 0.3 22:31 3.2	14th Wednesday	02:56 3.3 09:07 0.5 15:37 3.3 21:33 0.7
		15th Thursday	03:55 3.1 10:16 0.7 16:43 3.1 22:44 1.0

	Time	Metres	Time	Metres
16th Friday	05:07 3.0 11:48 0.8 18:06 2.9		24th Saturday	05:47 0.6 12:16 3.4 18:11 0.5
17th Saturday	00:13 1.1 06:40 2.9 13:11 0.7 19:30 2.9		25th Sunday	00:30 3.2 06:16 0.6 12:47 3.3 18:40 0.6
18th Sunday	01:33 1.0 07:58 3.1 14:23 0.6 20:34 3.0		26th Monday	01:03 3.3 06:48 0.6 13:20 3.3 19:12 0.7
19th Monday	02:40 0.9 08:56 3.2 15:20 0.4 21:26 3.1		27th Tuesday	01:39 3.3 07:24 0.6 13:55 3.2 19:47 0.7
20th Tuesday	03:33 0.7 09:45 3.4 16:06 0.3 22:10 3.2		28th Wednesday	02:17 3.3 08:03 0.6 14:34 3.1 20:27 0.8
21st Wednesday	04:14 0.6 10:28 3.4 16:43 0.3 22:50 3.2		29th Thursday	02:59 3.2 08:47 0.8 15:20 3.0 21:13 1.0
22nd Thursday	04:48 0.6 11:07 3.4 17:15 0.4 23:26 3.2		30th Friday	03:47 3.1 09:39 0.9 16:18 2.8 22:11 1.2
23rd Friday	05:18 0.6 11:43 3.4 17:42 0.5 23:59 3.2		31st Saturday	04:46 2.9 10:47 1.0 17:25 2.7 23:46 1.2

**April
2012**

		Time	Metres
1st Sunday	05:51 2.9 12:34 1.0 18:33 2.7	8th Sunday	05:36 0.2 11:52 3.7 17:55 0.2
2nd Monday	01:12 1.1 06:57 2.9 13:40 0.8 19:39 2.8	9th Monday	00:14 3.5 06:20 0.2 12:43 3.7 18:40 0.3
3rd Tuesday	02:09 1.0 07:58 3.1 14:31 0.6 20:35 3.0	10th Tuesday	01:03 3.5 07:07 0.2 13:36 3.6 19:28 0.4
4th Wednesday	02:56 0.8 08:50 3.3 15:14 0.4 21:21 3.2	11th Wednesday	01:53 3.5 07:59 0.3 14:31 3.4 20:21 0.6
5th Thursday	03:37 0.6 09:35 3.5 15:53 0.2 22:02 3.3	12th Thursday	02:46 3.4 08:57 0.4 15:30 3.2 21:19 0.8
6th Friday	04:16 0.4 10:19 3.6 16:32 0.1 22:44 3.4	13th Friday	03:43 3.3 10:09 0.6 16:35 3.0 22:30 1.0
7th Saturday	04:55 0.3 11:05 3.7 17:12 0.1 23:27 3.5	14th Saturday	04:50 3.1 11:33 0.7 17:53 2.9 23:50 1.1
		15th Sunday	06:15 3.0 12:48 0.6 19:09 2.9

	Time	Metres	Time	Metres
16th Monday	01:05 1.1 07:30 3.1 13:57 0.6 20:09 3.0		24th Tuesday	00:34 3.4 06:26 0.6 12:49 3.2 18:46 0.7
17th Tuesday	02:13 0.9 08:29 3.2 14:53 0.5 20:59 3.0		25th Wednesday	01:09 3.4 07:01 0.6 13:24 3.2 19:22 0.8
18th Wednesday	03:08 0.8 09:18 3.3 15:38 0.4 21:43 3.1		26th Thursday	01:46 3.4 07:39 0.6 14:04 3.1 20:02 0.9
19th Thursday	03:51 0.7 10:02 3.3 16:14 0.5 22:23 3.2		27th Friday	02:26 3.3 08:22 0.7 14:50 3.0 20:49 1.0
20th Friday	04:25 0.7 10:41 3.3 16:44 0.5 22:59 3.2		28th Saturday	03:11 3.2 09:13 0.8 15:47 2.9 21:44 1.1
21st Saturday	04:54 0.6 11:17 3.3 17:12 0.6 23:31 3.3		29th Sunday	04:05 3.1 10:13 0.8 16:51 2.8 22:50 1.2
22nd Sunday	05:24 0.6 11:49 3.2 17:43 0.6		30th Monday	05:09 3.0 11:29 0.8 17:58 2.8
23rd Monday	00:02 3.3 05:54 0.6 12:18 3.2 18:13 0.7			

Safety First
on Belfast Lough

**May
2012**

		Time	Metres		Time	Metres
1st Tuesday	00:13 1.1 06:15 3.0 12:51 0.7 19:00 2.9			8th Tuesday	00:00 3.6 06:07 0.2 12:30 3.6 18:24 0.4	
2nd Wednesday	01:23 1.0 07:18 3.2 13:49 0.5 19:57 3.0			9th Wednesday	00:51 3.6 06:57 0.2 13:24 3.5 19:14 0.5	
3rd Thursday	02:18 0.8 08:15 3.3 14:37 0.4 20:48 3.2			10th Thursday	01:41 3.6 07:50 0.3 14:19 3.4 20:08 0.7	
4th Friday	03:05 0.6 09:07 3.5 15:21 0.3 21:35 3.4			11th Friday	02:33 3.5 08:50 0.4 15:17 3.2 21:06 0.8	
5th Saturday	03:50 0.5 09:57 3.6 16:05 0.2 22:22 3.5			12th Saturday	03:27 3.4 09:57 0.5 16:19 3.1 22:11 1.0	
6th Sunday	04:35 0.3 10:47 3.7 16:49 0.2 23:10 3.6			13th Sunday	04:27 3.3 11:08 0.6 17:27 2.9 23:20 1.0	
7th Monday	05:20 0.2 11:37 3.7 17:36 0.3			14th Monday	05:37 3.1 12:14 0.6 18:35 2.9	
				15th Tuesday	00:26 1.1 06:51 3.1 13:17 0.6 19:34 2.9	

	Time	Metres		Time	Metres
16th Wednesday	01:30 1.0 07:54 3.1 14:13 0.6 20:25 3.0		24th Thursday	00:44 3.5 06:45 0.6 12:57 3.2 19:04 0.8	
17th Thursday	02:28 0.9 08:47 3.2 15:00 0.6 21:11 3.1		25th Friday	01:20 3.5 07:22 0.6 13:37 3.1 19:44 0.8	
18th Friday	03:17 0.9 09:33 3.2 15:39 0.6 21:52 3.2		26th Saturday	01:59 3.4 08:03 0.6 14:23 3.1 20:29 0.9	
19th Saturday	03:57 0.8 10:14 3.2 16:13 0.7 22:30 3.3		27th Sunday	02:43 3.4 08:51 0.6 15:16 3.0 21:20 1.0	
20th Sunday	04:30 0.7 10:51 3.2 16:45 0.7 23:05 3.4		28th Monday	03:33 3.3 09:45 0.7 16:15 2.9 22:17 1.0	
21st Monday	05:03 0.7 11:24 3.2 17:18 0.7 23:37 3.4		29th Tuesday	04:30 3.2 10:47 0.7 17:19 2.9 23:20 1.0	
22nd Tuesday	05:36 0.7 11:53 3.2 17:53 0.7		30th Wednesday	05:34 3.2 11:56 0.7 18:22 3.0	
23rd Wednesday	00:10 3.5 06:10 0.6 12:23 3.2 18:27 0.8		31st Thursday	00:30 1.0 06:40 3.2 13:04 0.6 19:21 3.1	

June 2012

		Time	Metres
1st Friday	01:37 0.9 07:44 3.3 14:03 0.5 20:18 3.2	8th Friday	01:26 3.7 07:41 0.3 14:02 3.3 19:53 0.7
2nd Saturday	02:37 0.7 08:43 3.5 14:55 0.4 21:12 3.4	9th Saturday	02:15 3.6 08:36 0.3 14:56 3.2 20:47 0.8
3rd Sunday	03:31 0.5 09:39 3.6 15:45 0.4 22:04 3.5	10th Sunday	03:05 3.5 09:34 0.5 15:50 3.1 21:42 0.9
4th Monday	04:22 0.4 10:32 3.6 16:34 0.4 22:55 3.6	11th Monday	03:57 3.4 10:34 0.6 16:46 3.0 22:41 1.0
5th Tuesday	05:11 0.3 11:24 3.6 17:23 0.4 23:46 3.7	12th Tuesday	04:51 3.2 11:34 0.7 17:43 3.0 23:42 1.1
6th Wednesday	06:00 0.2 12:16 3.5 18:12 0.5	13th Wednesday	05:52 3.1 12:32 0.8 18:42 2.9
7th Thursday	00:36 3.7 06:50 0.2 13:09 3.4 19:02 0.6	14th Thursday	00:44 1.1 07:01 3.0 13:28 0.8 19:39 3.0
		15th Friday	01:44 1.1 08:07 3.0 14:18 0.8 20:32 3.1

	Time	Metres	Time	Metres
16th Saturday	02:39 1.0 09:01 3.0 15:03 0.8 21:19 3.2		24th Sunday	01:34 3.5 07:44 0.5 13:56 3.1 20:08 0.8
17th Sunday	03:27 0.9 09:47 3.1 15:43 0.8 22:01 3.3		25th Monday	02:18 3.5 08:28 0.5 14:45 3.1 20:55 0.8
18th Monday	04:06 0.8 10:27 3.1 16:20 0.8 22:40 3.4		26th Tuesday	03:05 3.5 09:17 0.5 15:39 3.1 21:46 0.9
19th Tuesday	04:43 0.7 11:03 3.2 16:57 0.7 23:16 3.4		27th Wednesday	03:58 3.4 10:13 0.6 16:38 3.0 22:44 0.9
20th Wednesday	05:18 0.7 11:33 3.2 17:33 0.7 23:47 3.5		28th Thursday	04:58 3.3 11:16 0.7 17:42 3.0 23:51 0.9
21st Thursday	05:53 0.6 12:00 3.2 18:10 0.7		29th Friday	06:06 3.3 12:28 0.7 18:49 3.1
22nd Friday	00:18 3.5 06:29 0.5 12:32 3.2 18:47 0.8		30th Saturday	01:08 0.9 07:18 3.3 13:38 0.7 19:54 3.2
23rd Saturday	00:54 3.5 07:05 0.5 13:11 3.2 19:26 0.8			

Safety First
on Belfast Lough

July 2012

	Time	Metres		Time	Metres
1st Sunday	02:19 0.8 08:26 3.3 14:39 0.6 20:56 3.3		8th Sunday	01:53 3.6 08:10 0.4 14:27 3.2 20:15 0.7	
2nd Monday	03:19 0.6 09:27 3.4 15:33 0.5 21:52 3.5		9th Monday	02:38 3.5 08:56 0.5 15:14 3.1 21:00 0.8	
3rd Tuesday	04:14 0.4 10:21 3.5 16:24 0.5 22:43 3.6		10th Tuesday	03:23 3.4 09:45 0.6 16:00 3.1 21:48 0.9	
4th Wednesday	05:04 0.3 11:12 3.5 17:12 0.5 23:32 3.7		11th Wednesday	04:10 3.3 10:41 0.8 16:48 3.0 22:43 1.0	
5th Thursday	05:52 0.2 12:01 3.4 18:00 0.6		12th Thursday	05:00 3.1 11:42 0.9 17:39 3.0 23:50 1.1	
6th Friday	00:20 3.7 06:39 0.2 12:51 3.3 18:45 0.6		13th Friday	05:57 2.9 12:42 1.0 18:36 3.0	
7th Saturday	01:07 3.7 07:25 0.3 13:39 3.3 19:31 0.7		14th Saturday	01:00 1.2 07:04 2.9 13:39 1.0 19:40 3.0	
			15th Sunday	02:02 1.1 08:24 2.9 14:31 1.0 20:43 3.1	

	Time	Metres		Time	Metres
16th Monday	02:56 1.0 09:22 3.0 15:16 0.9 21:34 3.3		24th Tuesday	01:52 3.6 08:03 0.4 14:16 3.2 20:28 0.7	
17th Tuesday	03:42 0.8 10:06 3.1 15:57 0.8 22:16 3.4		25th Wednesday	02:40 3.6 08:49 0.5 15:08 3.2 21:17 0.7	
18th Wednesday	04:21 0.7 10:43 3.1 16:35 0.7 22:52 3.4		26th Thursday	03:32 3.5 09:42 0.6 16:05 3.1 22:14 0.8	
19th Thursday	04:57 0.6 11:13 3.2 17:12 0.7 23:22 3.5		27th Friday	04:31 3.3 10:43 0.7 17:10 3.0 23:24 0.9	
20th Friday	05:33 0.5 11:36 3.2 17:49 0.7 23:51 3.5		28th Saturday	05:41 3.2 12:00 0.8 18:23 3.0	
21st Saturday	06:09 0.4 12:06 3.2 18:26 0.7		29th Sunday	00:52 0.9 07:01 3.1 13:23 0.8 19:40 3.1	
22nd Sunday	00:27 3.6 06:44 0.4 12:45 3.2 19:03 0.6		30th Monday	02:09 0.8 08:18 3.2 14:29 0.8 20:48 3.3	
23rd Monday	01:08 3.6 07:22 0.4 13:29 3.2 19:43 0.7		31st Tuesday	03:12 0.6 09:21 3.3 15:25 0.7 21:44 3.4	

August 2012

1st Wednesday	04:07 0.4 10:14 3.3 16:15 0.6 22:33 3.6
-------------------------	--

2nd Thursday	04:55 0.3 11:01 3.4 17:00 0.6 23:19 3.6
------------------------	--

3rd Friday	05:39 0.2 11:46 3.3 17:43 0.6
----------------------	-------------------------------------

4th Saturday	00:02 3.6 06:20 0.3 12:29 3.3 18:22 0.6
------------------------	--

5th Sunday	00:45 3.6 06:59 0.4 13:11 3.2 18:59 0.7
----------------------	--

6th Monday	01:26 3.6 07:34 0.5 13:53 3.2 19:36 0.7
----------------------	--

7th Tuesday	02:07 3.5 08:08 0.6 14:35 3.2 20:15 0.8
-----------------------	--

	Time	Metres
8th Wednesday	02:49 3.4 08:45 0.7 15:18 3.2 20:58 0.9	

9th Thursday	03:31 3.2 09:28 0.9 16:04 3.1 21:45 1.0
------------------------	--

10th Friday	04:18 3.1 10:21 1.0 16:54 3.0 22:44 1.1
-----------------------	--

11th Saturday	05:12 2.9 11:46 1.2 17:49 3.0
-------------------------	-------------------------------------

12th Sunday	00:13 1.2 06:14 2.8 13:01 1.2 18:51 3.0
-----------------------	--

13th Monday	01:28 1.1 07:31 2.7 13:59 1.1 20:01 3.0
-----------------------	--

14th Tuesday	02:26 1.0 08:56 2.9 14:49 0.9 21:02 3.2
------------------------	--

15th Wednesday	03:14 0.8 09:42 3.0 15:33 0.8 21:46 3.3
--------------------------	--

	Time	Metres
16th Thursday	03:56 0.6 10:18 3.1 16:12 0.7 22:21 3.4	

17th Friday	04:33 0.5 10:46 3.2 16:49 0.6 22:51 3.5
-----------------------	--

18th Saturday	05:08 0.4 11:10 3.2 17:24 0.6 23:23 3.6
-------------------------	--

19th Sunday	05:43 0.3 11:41 3.3 18:00 0.6
-----------------------	-------------------------------------

20th Monday	00:01 3.7 06:18 0.3 12:20 3.3 18:37 0.5
-----------------------	--

21st Tuesday	00:43 3.7 06:56 0.3 13:03 3.3 19:17 0.5
------------------------	--

22nd Wednesday	01:29 3.7 07:38 0.4 13:50 3.3 20:02 0.6
--------------------------	--

23rd Thursday	02:18 3.6 08:24 0.5 14:41 3.3 20:53 0.7
-------------------------	--

	Time	Metres
24th Friday	03:12 3.5 09:16 0.7 15:38 3.2 21:52 0.8	

25th Saturday	04:13 3.3 10:18 0.9 16:46 3.1 23:09 0.9
-------------------------	--

26th Sunday	05:28 3.1 11:42 1.0 18:07 3.0
-----------------------	-------------------------------------

27th Monday	00:45 0.9 06:56 3.0 13:12 1.0 19:34 3.1
-----------------------	--

28th Tuesday	02:02 0.8 08:15 3.0 14:21 0.9 20:41 3.3
------------------------	--

29th Wednesday	03:05 0.6 09:14 3.2 15:16 0.8 21:34 3.5
--------------------------	--

30th Thursday	03:58 0.4 10:03 3.3 16:04 0.7 22:20 3.6
-------------------------	--

31st Friday	04:42 0.3 10:46 3.3 16:45 0.6 23:02 3.6
-----------------------	--

**September
2012**

		Time	Metres
1st Saturday	05:21 0.3 11:27 3.3 17:22 0.6 23:42 3.6	8th Saturday	03:39 3.0 09:29 1.1 16:13 3.1 21:57 1.1
2nd Sunday	05:56 0.4 12:05 3.3 17:55 0.6	9th Sunday	04:33 2.9 10:30 1.2 17:09 3.0 23:12 1.2
3rd Monday	00:20 3.5 06:26 0.5 12:42 3.3 18:27 0.7	10th Monday	05:36 2.7 12:19 1.3 18:10 3.0
4th Tuesday	00:57 3.5 06:55 0.6 13:18 3.3 19:00 0.7	11th Tuesday	00:51 1.2 06:46 2.7 13:27 1.2 19:15 3.0
5th Wednesday	01:34 3.4 07:26 0.7 13:57 3.3 19:37 0.7	12th Wednesday	01:53 1.0 08:08 2.8 14:20 1.0 20:18 3.2
6th Thursday	02:13 3.3 08:02 0.8 14:38 3.3 20:18 0.8	13th Thursday	02:43 0.8 09:05 3.0 15:05 0.9 21:06 3.3
7th Friday	02:53 3.2 08:42 0.9 15:23 3.2 21:03 0.9	14th Friday	03:26 0.6 09:41 3.2 15:45 0.7 21:45 3.5
		15th Saturday	04:04 0.4 10:13 3.3 16:22 0.6 22:21 3.6

	Time	Metres	Time	Metres
16th Sunday	04:39 0.3 10:44 3.4 16:57 0.5 22:58 3.7		24th Monday	05:23 3.0 11:29 1.2 17:56 3.1
17th Monday	05:14 0.3 11:19 3.4 17:33 0.5 23:38 3.7		25th Tuesday	00:35 0.9 06:50 3.0 12:58 1.2 19:20 3.2
18th Tuesday	05:51 0.3 11:58 3.5 18:12 0.5		26th Wednesday	01:50 0.7 08:02 3.0 14:08 1.0 20:24 3.3
19th Wednesday	00:23 3.7 06:32 0.3 12:42 3.5 18:55 0.5		27th Thursday	02:53 0.6 08:58 3.2 15:04 0.9 21:16 3.5
20th Thursday	01:12 3.7 07:16 0.4 13:31 3.5 19:43 0.5		28th Friday	03:42 0.5 09:44 3.3 15:49 0.8 22:01 3.6
21st Friday	02:04 3.6 08:04 0.6 14:23 3.4 20:36 0.6		29th Saturday	04:23 0.4 10:26 3.3 16:26 0.7 22:43 3.6
22nd Saturday	03:01 3.4 08:58 0.8 15:22 3.3 21:38 0.8		30th Sunday	04:57 0.5 11:04 3.4 16:59 0.7 23:21 3.5
23rd Sunday	04:06 3.2 10:02 1.0 16:32 3.2 23:03 0.9			

Safety First
on Belfast Lough

**October
2012**

		Time	Metres
1st Monday	05:26 0.6 11:39 3.4 17:29 0.7 23:55 3.5	8th Monday	03:58 2.9 09:49 1.3 16:30 3.1 22:25 1.2
2nd Tuesday	05:54 0.7 12:12 3.4 17:59 0.7	9th Tuesday	05:02 2.8 11:09 1.4 17:31 3.0 23:59 1.2
3rd Wednesday	00:28 3.4 06:22 0.7 12:46 3.4 18:31 0.7	10th Wednesday	06:09 2.8 12:46 1.3 18:34 3.1
4th Thursday	01:02 3.4 06:53 0.8 13:22 3.5 19:07 0.8	11th Thursday	01:13 1.0 07:17 2.9 13:45 1.2 19:34 3.2
5th Friday	01:38 3.3 07:28 0.9 14:02 3.4 19:46 0.8	12th Friday	02:07 0.8 08:16 3.1 14:33 1.0 20:27 3.4
6th Saturday	02:18 3.2 08:07 1.0 14:45 3.4 20:30 0.9	13th Saturday	02:51 0.6 09:02 3.2 15:14 0.8 21:12 3.5
7th Sunday	03:03 3.1 08:53 1.1 15:34 3.3 21:22 1.1	14th Sunday	03:30 0.5 09:42 3.4 15:52 0.7 21:54 3.7
		15th Monday	04:07 0.4 10:20 3.5 16:30 0.6 22:37 3.8

	Time	Metres	Time	Metres
16th Tuesday	04:46 0.3 11:00 3.6 17:09 0.5 23:22 3.8	24th Wednesday	00:14 0.8 06:32 3.0 12:32 1.2 18:56 3.3	
17th Wednesday	05:27 0.4 11:43 3.7 17:52 0.4	25th Thursday	01:25 0.8 07:39 3.1 13:42 1.1 19:59 3.4	
18th Thursday	00:11 3.8 06:11 0.4 12:30 3.7 18:38 0.4	26th Friday	02:27 0.7 08:33 3.2 14:40 1.0 20:52 3.4	
19th Friday	01:03 3.7 06:58 0.6 13:21 3.6 19:29 0.5	27th Saturday	03:16 0.6 09:20 3.3 15:27 0.9 21:39 3.5	
20th Saturday	01:58 3.6 07:49 0.7 14:14 3.6 20:25 0.6	28th Sunday	03:56 0.6 10:02 3.4 16:05 0.8 22:21 3.5	
21st Sunday	02:57 3.4 08:45 0.9 15:13 3.5 21:30 0.7	29th Monday	04:28 0.7 10:40 3.4 16:37 0.8 22:59 3.5	
22nd Monday	04:01 3.2 09:51 1.1 16:19 3.3 22:52 0.8	30th Tuesday	04:57 0.8 11:15 3.5 17:07 0.8 23:33 3.4	
23rd Tuesday	05:15 3.1 11:11 1.2 17:38 3.2	31st Wednesday	05:26 0.8 11:46 3.5 17:38 0.8	

**November
2012**

		Time	Metres
1st Thursday	00:03 3.4 05:57 0.9 12:19 3.6 18:10 0.8	8th Thursday	05:32 2.9 11:38 1.4 17:52 3.2
2nd Friday	00:34 3.4 06:29 0.9 12:54 3.6 18:45 0.8	9th Friday	00:12 1.0 06:35 3.0 12:55 1.3 18:53 3.3
3rd Saturday	01:09 3.3 07:04 1.0 13:32 3.6 19:23 0.8	10th Saturday	01:18 0.9 07:34 3.1 13:52 1.1 19:50 3.4
4th Sunday	01:48 3.3 07:43 1.0 14:12 3.5 20:05 0.9	11th Sunday	02:09 0.7 08:26 3.3 14:40 0.9 20:42 3.6
5th Monday	02:31 3.2 08:27 1.1 14:57 3.4 20:53 1.0	12th Monday	02:55 0.6 09:13 3.5 15:25 0.7 21:32 3.7
6th Tuesday	03:24 3.0 09:20 1.2 15:48 3.3 21:50 1.0	13th Tuesday	03:39 0.5 09:59 3.6 16:08 0.6 22:20 3.8
7th Wednesday	04:26 3.0 10:22 1.3 16:48 3.2 22:56 1.1	14th Wednesday	04:23 0.5 10:44 3.7 16:53 0.5 23:10 3.8
		15th Thursday	05:08 0.5 11:32 3.8 17:40 0.4

	Time	Metres	Time	Metres
16th Friday	00:01 3.8 05:55 0.6 12:22 3.8 18:28 0.4		24th Saturday	01:46 0.9 08:01 3.2 14:03 1.1 20:23 3.3
17th Saturday	00:55 3.7 06:44 0.7 13:13 3.8 19:20 0.5		25th Sunday	02:39 0.8 08:51 3.3 14:57 1.0 21:13 3.4
18th Sunday	01:50 3.6 07:36 0.8 14:06 3.7 20:16 0.5		26th Monday	03:23 0.9 09:35 3.4 15:40 1.0 21:58 3.4
19th Monday	02:47 3.4 08:33 0.9 15:01 3.6 21:20 0.6		27th Tuesday	03:59 0.9 10:16 3.5 16:16 0.9 22:38 3.4
20th Tuesday	03:48 3.3 09:35 1.1 16:00 3.5 22:31 0.7		28th Wednesday	04:31 0.9 10:53 3.6 16:49 0.9 23:14 3.4
21st Wednesday	04:53 3.2 10:44 1.2 17:07 3.4 23:41 0.8		29th Thursday	05:04 0.9 11:27 3.6 17:22 0.8 23:46 3.3
22nd Thursday	06:01 3.1 11:55 1.2 18:20 3.3		30th Friday	05:38 0.9 11:59 3.7 17:56 0.8
23rd Friday	00:46 0.8 07:05 3.1 13:02 1.2 19:26 3.3			

Safety First
on Belfast Lough

**December
2012**

		Time	Metres
1st Saturday	00:14	3.3	
	06:12	0.9	
	12:32	3.7	
	18:30	0.8	
2nd Sunday	00:45	3.3	
	06:47	1.0	
	13:07	3.7	
	19:06	0.8	
3rd Monday	01:21	3.3	
	07:25	1.0	
	13:44	3.6	
	19:46	0.8	
4th Tuesday	02:02	3.2	
	08:07	1.0	
	14:25	3.5	
	20:29	0.8	
5th Wednesday	02:49	3.1	
	08:54	1.1	
	15:11	3.5	
	21:19	0.9	
6th Thursday	03:43	3.1	
	09:47	1.2	
	16:03	3.4	
	22:15	0.9	
7th Friday	04:45	3.0	
	10:47	1.2	
	17:04	3.3	
	23:18	0.9	
8th Saturday	05:50	3.1	
	11:55	1.2	
	18:10	3.3	
9th Sunday	00:25	0.9	
	06:53	3.1	
	13:06	1.1	
	19:14	3.4	
10th Monday	01:30	0.8	
	07:52	3.3	
	14:09	1.0	
	20:15	3.5	
11th Tuesday	02:27	0.7	
	08:48	3.4	
	15:05	0.8	
	21:13	3.6	
12th Wednesday	03:19	0.6	
	09:41	3.6	
	15:56	0.6	
	22:06	3.7	
13th Thursday	04:08	0.6	
	10:31	3.7	
	16:45	0.5	
	22:58	3.7	
14th Friday	04:56	0.6	
	11:21	3.8	
	17:33	0.4	
	23:50	3.7	
15th Saturday	05:44	0.6	
	12:10	3.9	
	18:22	0.3	

	Time	Metres	Time	Metres	
16th Sunday	00:42	3.6	24th Monday	01:58	1.0
	06:33	0.7		08:17	3.2
	13:01	3.9		14:21	1.1
	19:12	0.4		20:46	3.2
17th Monday	01:36	3.5	25th Tuesday	02:48	1.0
	07:23	0.7		09:08	3.3
	13:51	3.8		15:14	1.0
	20:04	0.4		21:36	3.2
18th Tuesday	02:29	3.4	26th Wednesday	03:32	1.0
	08:15	0.8		09:54	3.4
	14:42	3.7		15:56	0.9
	21:00	0.5		22:20	3.3
19th Wednesday	03:23	3.3	27th Thursday	04:09	0.9
	09:10	0.9		10:34	3.5
	15:34	3.6		16:31	0.9
	22:00	0.7		22:58	3.3
20th Thursday	04:18	3.2	28th Friday	04:45	0.9
	10:09	1.1		11:11	3.6
	16:29	3.5		17:06	0.8
	23:02	0.8		23:32	3.3
21st Friday	05:15	3.1	29th Saturday	05:20	0.8
	11:13	1.1		11:44	3.6
	17:29	3.3		17:40	0.7
22nd Saturday	00:03	0.9	30th Sunday	00:00	3.3
	06:16	3.1		05:55	0.8
	12:18	1.2		12:13	3.7
	18:37	3.2		18:15	0.7
23rd Sunday	01:02	1.0	31st Monday	00:23	3.3
	07:19	3.1		06:31	0.8
	13:22	1.2		12:42	3.7
	19:47	3.1		18:50	0.7

Contact numbers

Belfast
Harbour

Harbour Office

Tel 028 9055 4422

Harbour Master's Office

Tel 028 9055 3014

Port Control

VHF Channel 12

Harbour Police

Tel 028 9055 3000

Department of Social
Development (DSD)

River Manager

Tel 028 9027 7642

River Warden

Tel 028 9031 5304

Safety First

on Belfast Lough
