



NOTICE TO MARINERS

NO 2 OF 2013

VTs Traffic Organisation Service & Use VHF within Belfast Harbour

VTs Traffic Organisation Service

Mariners are advised that at 0700 Local Time on the 1st of December 2006 Belfast Harbour Commissioners commenced operation of a Traffic Organisation Service.

This service is as described in Marine Guidance Note 401 (issued by the Maritime and Coastguard Agency) and includes a system of traffic clearances. The system of clearances will be operated under the delegated authority of the Harbour Master by the VTS.

The call sign for the VTS is **"Belfast Harbour Radio"**.

Belfast Harbour Radio can be contacted via Channel 12 VHF or by Telephone on +44 (0) 28 9055 3504

All vessels over 20m in length, commercial vessels, and vessels carrying passengers (herein referred to as Reporting Vessels) are required to report to Belfast Harbour Radio as detailed in this Notice.

Areas of Traffic Organisation Service and Traffic Information Service

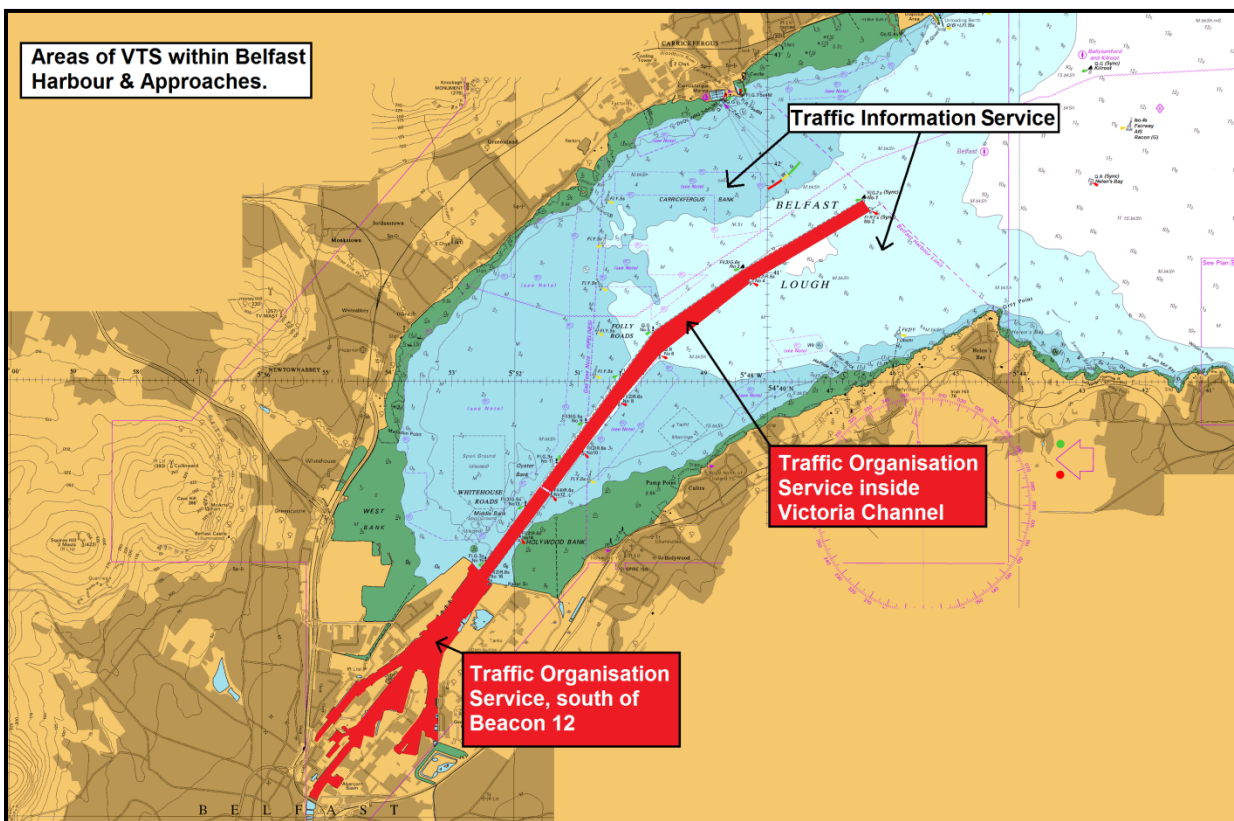
The area of coverage for the **Traffic Organisation Service** will be:

- Belfast Harbour South of Number 12 Buoy.
- Victoria channel to No.1 Buoy.

A **VTS information service** is offered in all other areas within Harbour Limits.

Timely information concerning traffic movements will be made available via VHF elsewhere in Belfast Lough for the purpose of managing the approaches to Harbour Limits.

These services will be available 24hrs a day.



Obtaining Traffic Clearance:

Reporting Vessels are not permitted to navigate in TOS areas without Traffic Clearance.

Traffic Clearance will be granted at the following times:

Inbound Vessels not requiring a Pilot:

15 minutes from Fairway Buoy, Traffic Clearance is given to proceed to berth.

Inbound Vessels requiring a Pilot:

15 minutes from Fairway Buoy, vessels will be advised to proceed to the appropriate Pilot Boarding Position.

Once Pilot has boarded, Traffic Clearance will be given.

Vessels must not proceed beyond the Pilot Boarding Position until their Pilot has boarded.

Departing Vessels and Vessels Moving or Shifting Berths:

Clearance will be given immediately prior to departing the berth.

Crossing Victoria Channel:

Vessels not bound to or from Belfast wishing to cross the Victoria Channel should seek permission from VTS before doing so.

Reporting to Belfast Harbour Radio

Vessels Inbound should report to Belfast Harbour Radio:

- 2 hours prior to arrival at the Fairway Buoy
- 15 minutes prior to arrival at the Fairway Buoy for clearance.
- Passing the Fairway Buoy inward.
- Pilot on the bridge for clearance (if applicable).
- Passing No 5 Beacon inward, detailing where vessel intends to swing (if applicable).
- Alongside at the berth.

Departing vessels should report to Belfast Harbour Radio:

- 15 minutes prior to departing the berth*.
- Immediately Prior to departing the berth, for clearance. Vessels should indicate where they intend to swing (if applicable)
- Passing No. 12 Beacon Outward, detailing where vessel will depart the Victoria Channel.
- Passing No. 2 (Harbour Limits) outward.

Vessels Moving or Shifting berths within the Harbour should report to Belfast Harbour Radio:

- 15 minutes prior to departing the berth*.
- Prior to departing the berth, for clearance. Vessels should indicate where they intend to swing (if applicable)
- Alongside at the berth.

***Mariners are advised that 2 hours notice will be required prior to arrival at the Fairway Buoy or prior to departure for any Pilot bookings. Mariners should refer to Belfast Harbour Pilotage Directions for Pilotage requirements and Pilot Boarding Positions.**

Initial arrival and departure reports made to VTS should include:

- Vessel Name
- Position
- Master's Name
- Deepest draft
- ETA at Fairway Buoy / ETD
- Confirm pilot requirements Inner / Full / Outsea Pilotage
- Hazardous cargo on Board.
- Defects.

Designation and use of VHF Channels

The following VHF Channels are in use within Belfast Harbour Limits:

VHF 12	VTs, Pilot Bookings, and bridge to bridge safety of navigation
VHF 8, 10 & 14	Tugs and Boatmen
VHF 9	Harland & Wolff operations – callsign “Ship Harland”
VHF 16	Distress & Urgency

Use of VHF Channel 12 should be limited to Port Operations and Safety of Navigation radio traffic. Mariners should avoid excessive use of airtime wherever possible.

Message Markers

The following IMO Standard Message Markers should be used for VHF communications relating to safety of Navigation within Harbour Limits:

QUESTION	indicates that the following message is of interrogative character.
ANSWER	indicates that the following message is the reply to a previous Question.
REQUEST	indicates that the contents of the following message are asking for action from others with respect to the ship.
INFORMATION	indicates that the following message is restricted to observed facts.
INTENTION	indicates that the following message informs others about immediate navigational actions intended to be taken.
WARNING	indicates that the following message informs other traffic participants about dangers.

- ADVICE indicates that the following message implies the intention of the sender to influence the recipient(s) by a recommendation.
- INSTRUCTION indicates that the following message implies the intention of the sender to influence the recipient(s) by a regulation – Normally only used by VTS

This notice supercedes Notice to Mariners no 2 of 2009, which is hereby cancelled.

PORT OPERATIONS CENTRE
BELFAST
28th December 2012

A handwritten signature in black ink, appearing to read 'K. G. Allen', written in a cursive style.

CAPTAIN K. G. ALLEN
HARBOUR MASTER