

Dear Marina user

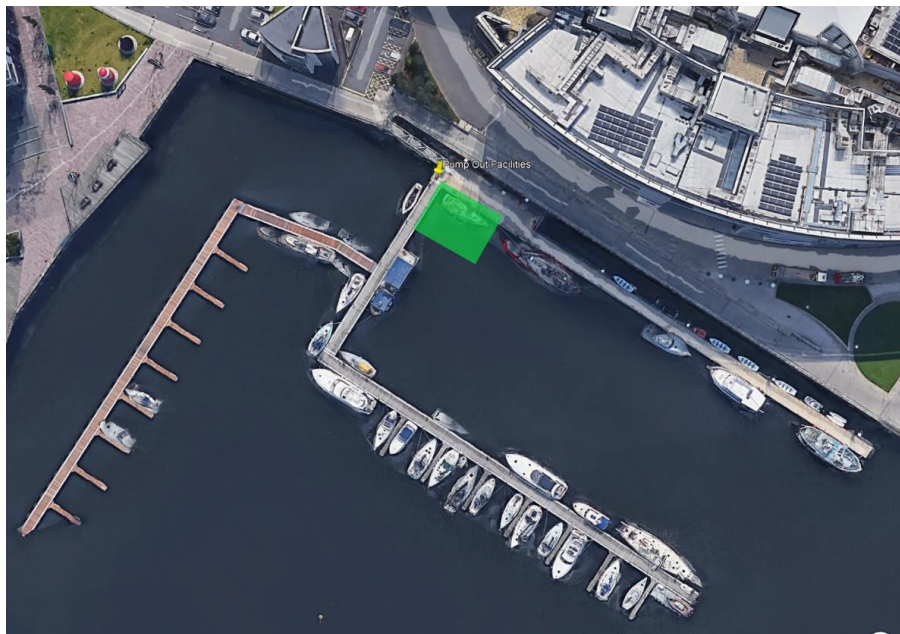
Belfast Harbour Marina Waste Pump-out Facilities

As part of our 'Green Port' initiative, Belfast Harbour is encouraging its staff, users and residents to adhere to environmentally friendly practices. As such, we must emphasise the need for Marina residents and users to avail of the local **waste pump-out facilities** located next to the entrance bridge to the Marina.

Belfast Harbour Marina will ensure that the area (marked in green in the diagram below) is kept clear at all times so that residents can avail of the facilities. Tokens are required to use the machine and are available **free of charge** from our Marina attendants.

Use of the pump-out facilities will be closely monitored going forward and we require all residents and visitors to avail of this service.

WASTE SHOULD NEVER BE DISCHARGED DIRECTLY INTO THE MARINA WATERS.



We also encourage the use of the waste facilities, located at the entrance to the Marina.

Please help us keep the Belfast Harbour Marina waters and facilities as clean as possible.

BIG CHANGES START WITH SMALL STEPS

Kind Regards,

Belfast Harbour Marina

