



# NOTICE TO MARINERS

## No. 19 of 2023

### VT4 Scour Protection Remediation

Mariners are advised that VT4 will be undergoing scour protection remediation starting on Monday 11<sup>th</sup> September 2023 for a period of roughly 10 weeks. Watercraft involved in the work are to keep a listening watch on Ch12 and include:

- Marine Specialists pontoon barge – CLIODNA, measuring 26.8m x 12.2m (figure 3)
- Support vessel – OCEAN SUPPORTER, a 19m multicat (figure 4)
- Autonomous Survey Vessel – OTTER, to be launched and recovered from the barge

The works will involve both the CLIODNA and OCEAN SUPPORTER replacing rock armour/scour protections and carrying out diving work, with ASV OTTER carrying out hydrographic surveys at certain stages of the remediation.

- Slow passes should be in place if works are ongoing at VT4.

The works are preliminarily planned to be carried out at the below times in between ferry movements due for VT4, however these are subject to change:

Available Working Window	Monday			Duration	Tuesday			Duration	Wednesday			Duration
1	07:30:00	-	09:45:00	02:15:00	03:30:00	-	05:45:00	02:15:00	03:30:00	-	05:45:00	02:15:00
2	11:30:00	-	13:45:00	02:15:00	07:30:00	-	09:45:00	02:15:00	07:30:00	-	09:45:00	02:15:00
3	15:30:00	-	17:45:00	02:15:00	11:30:00	-	13:45:00	02:15:00	11:30:00	-	13:45:00	02:15:00
4	19:30:00	-	21:45:00	02:15:00	15:30:00	-	17:45:00	02:15:00	15:30:00	-	17:45:00	02:15:00
5	23:30:00	-	01:45:00	02:15:00	19:30:00	-	21:45:00	02:15:00	19:30:00	-	21:45:00	02:15:00
6	N/A				23:30:00	-	01:45:00	02:15:00	23:30:00	-	01:45:00	02:15:00

Available Working Window	Thursday			Duration	Friday			Duration
1	03:30:00	-	05:45:00	02:15:00	03:30:00	-	05:45:00	02:15:00
2	07:30:00	-	09:45:00	02:15:00	07:30:00	-	09:45:00	02:15:00
3	11:30:00	-	13:45:00	02:15:00	11:30:00	-	13:45:00	02:15:00
4	15:30:00	-	17:45:00	02:15:00	15:30:00	-	17:45:00	02:15:00
5	19:30:00	-	21:45:00	02:15:00	19:30:00	-	21:45:00	02:15:00
6	23:30:00	-	01:45:00	02:15:00	23:30:00	-	01:45:00	02:15:00

Available Working Window	Saturday			Duration	Sunday			Duration
1	03:30:00	-	05:45:00	02:15:00	07:30:00	-	09:30:00	02:00:00
2	07:30:00	-	09:45:00	02:15:00	11:30:00	-	13:45:00	02:15:00
3	11:30:00	-	13:45:00	02:15:00	15:30:00	-	17:45:00	02:15:00
4	15:30:00	-	17:45:00	02:15:00	19:30:00	-	21:45:00	02:15:00
5	19:30:00	-	21:45:00	02:15:00	23:30:00	-	01:45:00	02:15:00
6	23:30:00	-	01:45:00	02:15:00	N/A			

Figures 1 & 2 below highlight both the Work Area – which will be occupied when free of traffic to carry out the necessary works mentioned above – and the Stand-by Area – which will be used to keep clear of traffic bound for VT4.

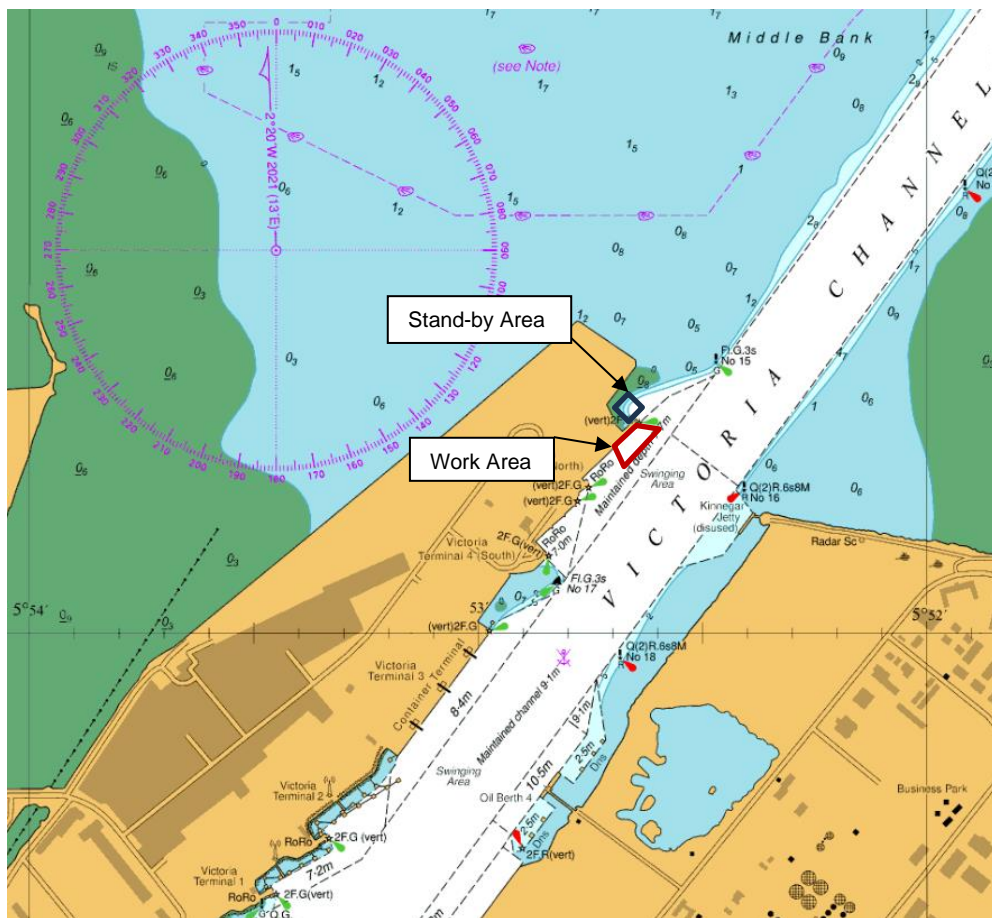


Figure 1: Work and Stand-by Area



Figure 2: Detailed Work and Stand-by Area



Figure 3: Marine Specialists pontoon barge – Clidna

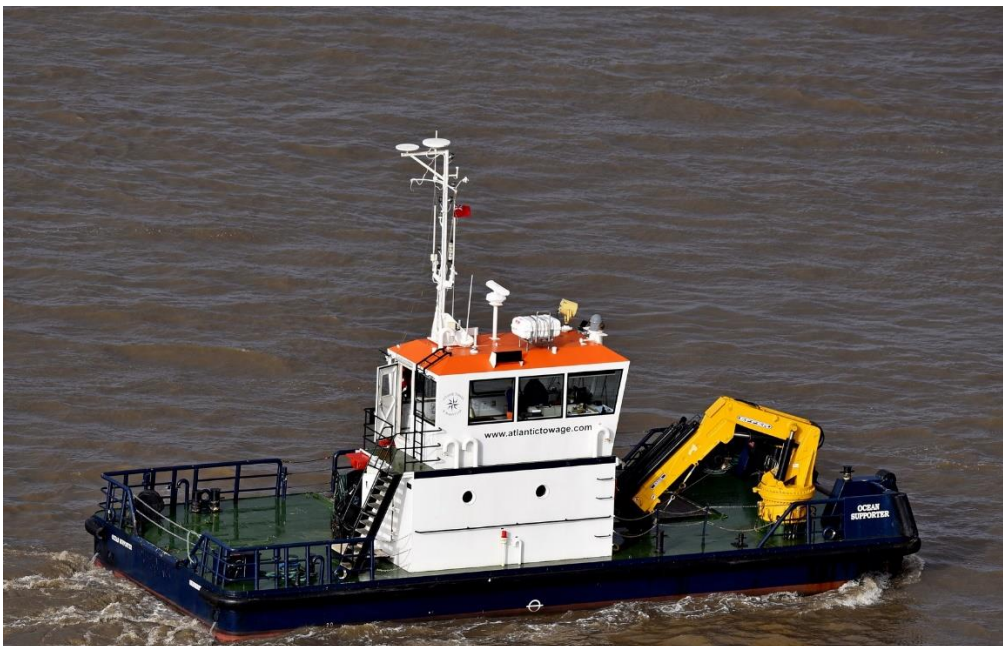


Figure 4: Support vessel – Ocean Supporter

Port Operations  
Belfast Harbour

Captain K G Allen  
Harbour Master  
8<sup>th</sup> September 2023