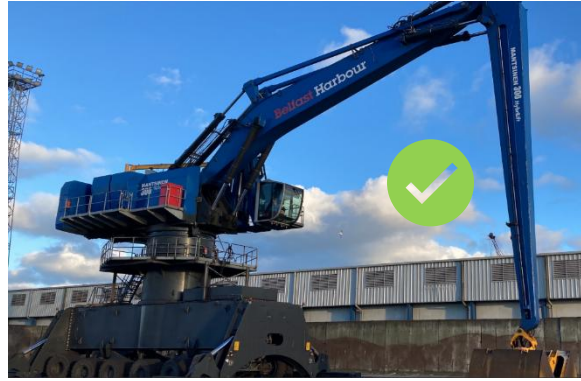
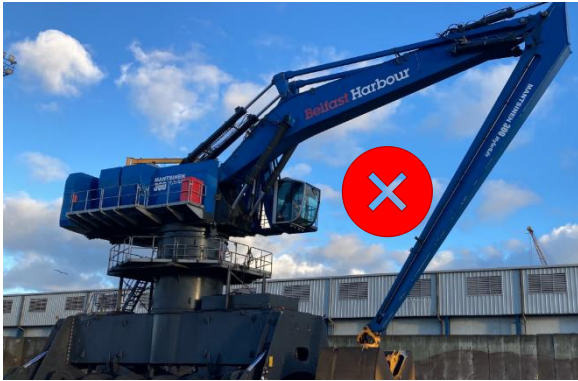


## Operational Notice

No.4 of 2026

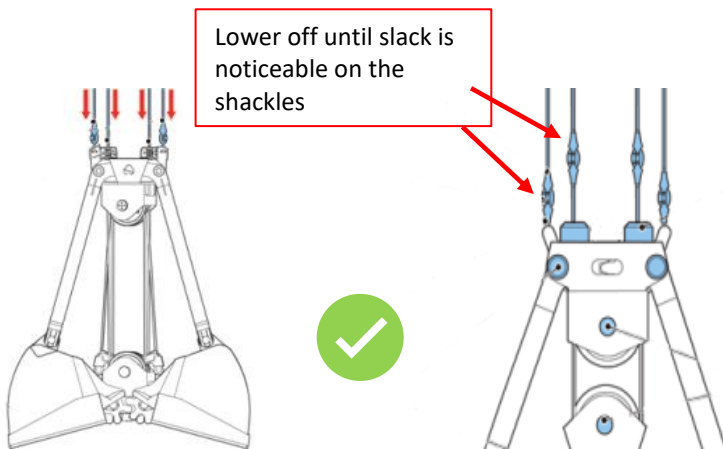
### Starting up & shutting down of Cranes



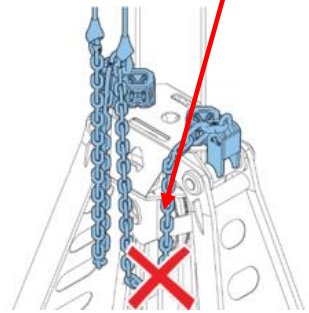
- ✓ Park the Material Handler with the stick positioned as vertical as possible– this supports the boom and limits creep during periods of inactivity.
- ✓ Grab open when crane is parked on a concrete surface
- ✓ Grab closed when on an asphalt surface

### Rope Type Harbour Cranes – Parking the crane grab after operation

- ✓ Cranes should be parked such that the weight of the grab is on the quay and not the ropes of the crane.



The crane chains should remain suspended, with only weight off the grab shackles



- ✓ Park the Crane grab away from other structures such as hoppers
- ✓ Grab open when crane is parked on a concrete surface and closed when on an asphalt surface.
- ✓ Grab weight removed from crane, allowing for efficient inspection of shackle load bearing points.

## All Diesel Engined Cranes – Warming up & cooling down

**Starting up:** Cranes should have a warming up period of at least 5 minutes, for colder temperatures, this time may be extended - refer to the below table.

Outside temperature t [°C]	Operating time [min]
t > 0 °C.	5.
0 °C > t > -10 °C.	15.
-10 °C < t < -20 °C.	30.
-20 °C < t < -30 °C.	45.
t < -30 °C.	60.

**Shutting Down:** Cranes should have a cool down period of up to 5 minutes, this allows the exhaust temperatures to stabilise.



**NOTE!** Never stop a turbo-charged engine immediately after heavy work. The result can be pitching of lubricant and carbon-build in the charger's bearing. Carbon deposit and pitch block lubricant channels, which may cause lubrication problems in different parts of the engine. To prevent problems, run the engine for a few minutes slowly idling at the end of work.

- ✓ Allow the crane engines to warm up before putting the crane to work
- ✓ Allow the crane engines to cool down following operations.