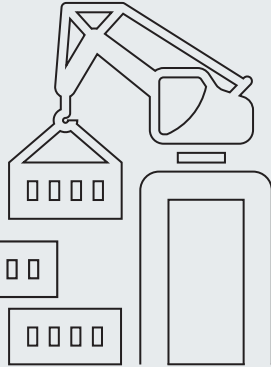


Belfast Harbour

Key Statistics 2019

24M

Tonnes of Cargo Handled



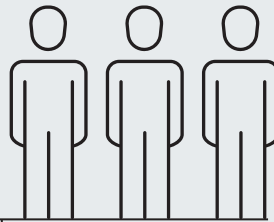
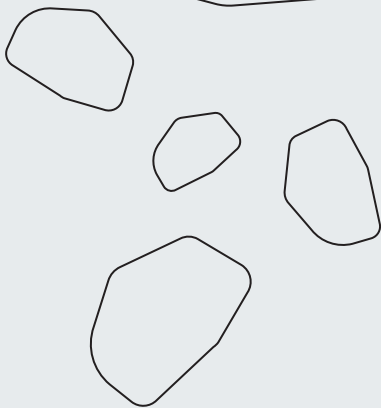
9.3M

Tonnes Dry Bulk



1.6M

Tonnes of Export Aggregates

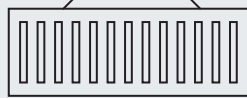


1.5 Million

Passengers Passed Through the Port

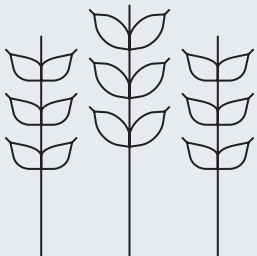
542,000

Freight Vehicles up 4%



2.1 Million

Tonnes Grain & Animal Feed

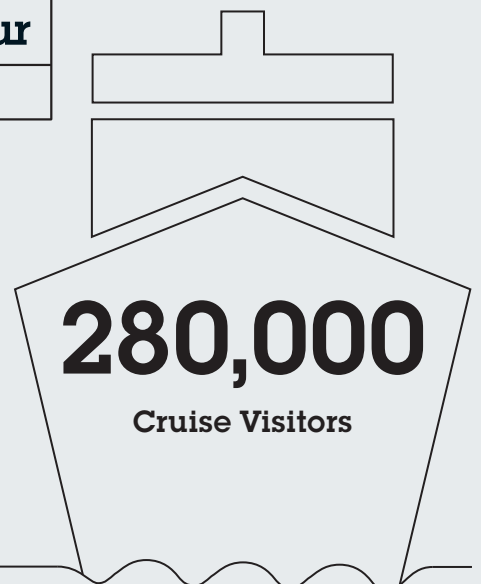


2.3M

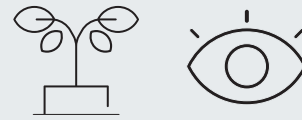
Liquid Bulk Tonnage

280,000

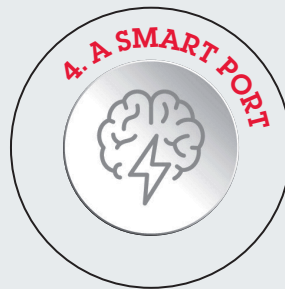
Cruise Visitors



2035



Vision Launched



£44M

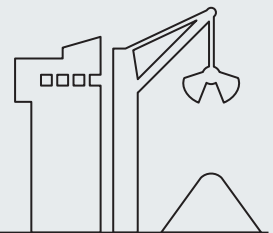
Invested in Port Operations & Estate in 2019

Largest

Hydraulic Material Handling Crane



900

 Space Multi-Story Car Park

Work Began on

City Quays 3

(NI's largest Grade 'A' Office Building)



£115M

Committed Capital Expenditure including **£55m** on container & ferry terminal upgrades

